

The Colorado Ownership, Management and Protection map (COMaP) is the state's premier map of protected lands. Do you need to find your local open spaces, natural areas, parks, and easements, or scan the entire state? Do you need to analyze patterns, identify wildlife corridors, or find stakeholders and partners? Do you need to promote your recreation areas or scope out new areas to protect? COMaP is the dataset for you!

COMaP features over 28,000 entries of protected lands from over 300 data sources, each of which contains a suite of attributes such as owner, manager, easement holder, public access, and more. Since its inception in 2004 at Colorado State University, COMaP has become the go-to resource for land managers, land owners, and the conservation community. COMaP is now a subscription service, hosting an interactive map and a data download center.

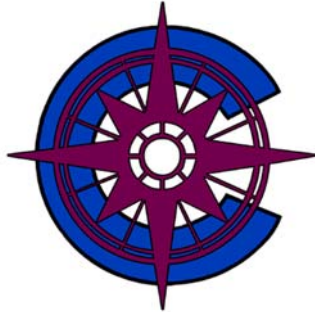
Subscribe to COMaP as a Service. Benefits Include:

- ❖ Access to the latest protected lands data through an online map
 - Use the interactive map to view and identify protected lands, query the map and download spreadsheets, overlay your files (kml or shp) or add comments and draw polygons on the areas you know best.
 - This is especially useful for **non-GIS users**.
- ❖ Access to a suite of data files from the data download center
 - Download the geodatabase and layer files to build your own maps and custom analyses, or serve the COMaP map service from your website.
 - This is especially useful for **GIS users**.

Non-profit Rate - \$175/yr * **Government Rate** - \$300/yr * **Small Business Rate** (< 5 employees) - \$300/yr * **Corporate Rate** - \$500/yr * **Academic Rate** (by academic unit) - \$500/yr --Fees subject to change, redistribution prohibited--



Contact Us: comap@colostate.edu, comap.cnhp.colostate.edu



Use COMaP For: Conservation planning/analyses * tourism and promotion * land acquisition/land exchanges * appraisals and land values * Threatened and Endangered species surveys * site assessments * priority habitat identification * conservation easement baseline reports * optimization tool support * cultural and historic preservation planning * long-range strategic planning * developing management goals * identifying partnerships * identifying linkages and corridors * permitting * risk management * decision support * wildland fire mitigations * future water supply options * planning for trails * outdoor recreational planning * utility work * grant writing * stakeholder identification * conflict avoidance * and more ...

Your Subscription Fee Covers:

- ❖ vital hardware and software replacements
- ❖ website enhancements
- ❖ product development
- ❖ and more...
- ❖ map updates
- ❖ coding upgrades
- ❖ E-Commerce fees
- ❖ bug fixes
- ❖ website testing
- ❖ user management

In March, 2016, COMaP as a Service will launch a new map. Highlights include a complete update of all state and federal lands, and many new easements from land trusts, Great Outdoors Colorado (GOCO), and governmental agencies. Through your service fee, COMaP will be continually updated and data will be refreshed biannually.

Costs to maintain the site and update the map far surpass subscription fees. Consider becoming a *Friend of COMaP!*



Contact Us: comap@colostate.edu, comap.cnhp.colostate.edu

Join our List of Friends!

- **Ensure COMaP meets your needs.** There are many demands placed on the map for updates. Help us fill in and prioritize data gaps.
- **Support new functionality and features.** Improvements and enhancements are a matter of course. Help us make desired feature requests a reality.
- **Help us invest in new technologies.** Servers and hardware have an average life span of 3-5 years. Coding must be contemporary. Help us optimize performance.
- **Promote yourself.** We shamelessly thank our friends. Be seen and admired by hundreds of users.
- **Bolster your projects.** In this day and age, information is everything. Support your field, add richness to research, and promote a good cause.
- **Contributions are tax deductible** to the fullest extent allowed by law. Consult your tax advisor.

The screenshot shows the website for the Colorado Natural Heritage Program's Ownership Management & Protection Map. The page features a navigation menu with links for Home, About COMaP, Data Sources, Pricing, Downloads, and Login. A central section titled 'Data Posted on 12/15/2015' offers download options: Geodatabase & lyrics, Shapefile & lyrics, Map Service, Data Tables, and KML. A 'Download Now' button is prominently displayed. To the right, a 'Special Thanks to Our Friends' section lists donors by level: Platinum (Colorado Natural Heritage Program), Gold (The Nature Conservancy), Silver (ENRACE WATER, ILS, Colorado Coalition of Land Trusts), Bronze (Colorado State Board of Natural Resources), and Honorable Mention (Colorado Open Space Alliance). A 'YOUR NAME HERE' placeholder is also present.

Levels: Bronze \$1,000/yr * Silver \$2,000/yr * Gold \$3,500 * Platinum \$5,000/yr

*Friends can donate any amount - Bronze: \$1,000-\$2,000 * Silver: \$2,000-\$3,500 * Gold: \$3,500-\$5,000 * Platinum: >=\$5,000*



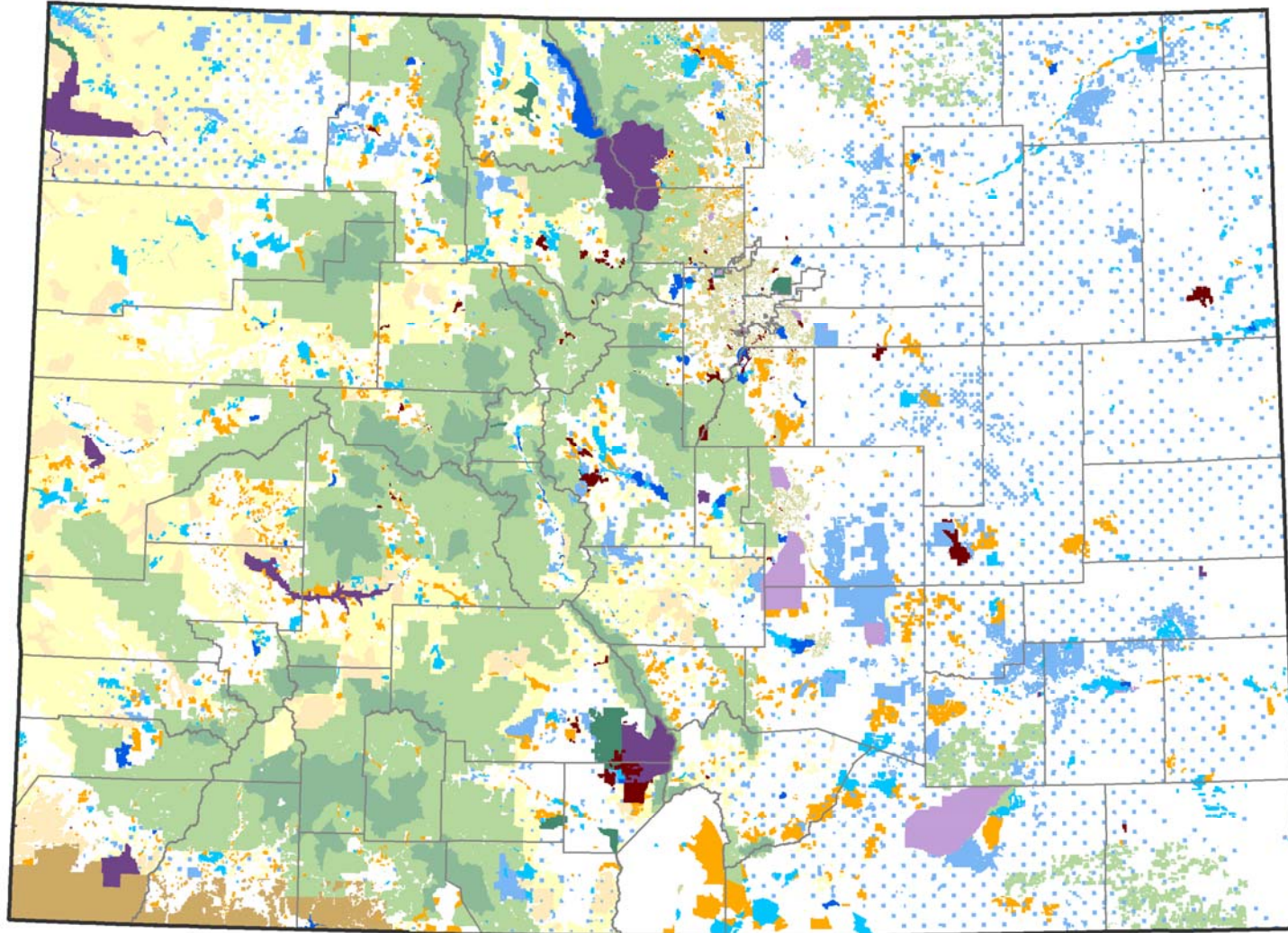
Contact Us: comap@colostate.edu, comap.cnhp.colostate.edu

Dive into a State-of-the-art Online Mapping Experience. Coming March, 2016!

The screenshot displays the COMaP (Colorado Open Mapping and Planning) interface, a state-of-the-art online mapping experience. The interface is divided into several sections:

- Top Left:** Navigation menu with options: Introduction, Zoom to a location, Search, and Post a note on the map.
- Top Right:** MapCollaborator™ logo and a "Base Maps" button.
- Center:** A map showing a natural area with various colored overlays (green, blue, orange, red). A "Share your map" dialog box is open, displaying a link: <http://comap.cnhp.colostate.edu/prod/mapcollab/?base=terrain>.
- Left Panel:** A "Post a note on the map" form with fields for "A title for this note:" (Missing Easement), "Description:" (There is an easement missing from XX land trust at this location.), and "Your contact info:" (Name: Amy Greenwell, Affiliation: CNHP-CSU, Email: amy.lavender@colostate.edu). A "Save note" button is at the bottom.
- Right Panel:** A "Search" panel with a "Keyword search" field, "Search by county" dropdown, and "Agency search" dropdown (City of Fort Collins). It shows 364 results, including "Riverbend Ponds Natural Area" and "Running Deer Natural Area Acquisition / Cache la Poudre-Big Thompson".
- Bottom Left:** A StreetView & BirdsEye view showing a road labeled "Co Rd 13" with a car. It includes a compass and navigation controls.
- Bottom Right:** A satellite view showing a road labeled "Maroon Creek Rd" with a scale bar (100 feet / 25m).

Colorado Ownership, Management and Protection Map



- | | | | | |
|------------------------|-------------------|-------------|----------------------|----------------------|
| BOR, DOD, Misc Federal | USFWS | NPS | State Land Board | Local (City/County) |
| BLM | USFS | Tribal | State Wildlife Areas | NGO/Land Trust |
| BLM - ACEC/Wilderness | USFS - Wilderness | State Parks | Misc State | Private Conservation |

Source:
COMaP v9